

# Rapid and Emergency Survey of Large Areas and Post-Disaster Evaluation

Earthquakes, Tornadoes, Floods and System Failures

# PICARRO

## APPLICATION BRIEF

### Emergency, Large Area Survey

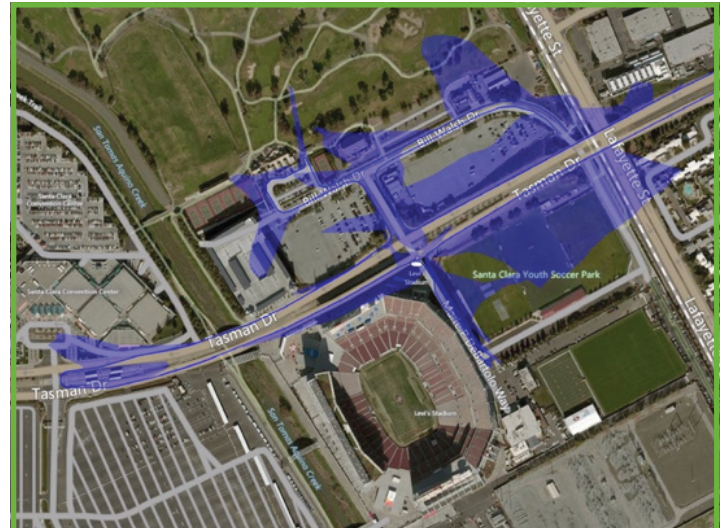
The ability of the Picarro system to survey a large area quickly and quantify the relative risk of leak indications has made it popular with multiple natural gas utilities for emergency leak survey response in communities after disasters and other events. Utilities have used Picarro after earthquakes, tornadoes, hurricanes, wildfires, floods, over-pressurization events and loss of odorant events. Pacific Gas & Electric performed a rapid survey within hours of the Napa earthquake and finished survey of the entire town within a few days, identifying a number of potentially hazardous leaks caused by the earthquake.

### Rapid Survey of High-Consequence Areas Prior to Public Events

The system is ideally suited for targeted, rapid surveys before high-profile public gatherings including parades, official visits, concerts and sporting events. Picarro was used to quickly perform a special leak survey in Santa Clara, CA in the days leading up to Super Bowl 50 and has been used for special leak surveys before other Super Bowls, parades and similar large events.



**Figure 1.** PG&E's fleet of Picarro Surveyor vehicles responded immediately after the August 24, 2014 Napa earthquake to do a rapid, post-disaster survey of Napa's entire gas infrastructure.



**Figure 2.** Survey results from Picarro survey near Levi's Stadium before Super Bowl 50.

# PICARRO

© 2019 PICARRO, INC.  
LIT CODE: AB01-V1.0-190515

3105 Patrick Henry Drive Santa Clara, CA 95054 | 408-962-3900 | [sales@picarro.com](mailto:sales@picarro.com) | [picarro.com](http://picarro.com)